

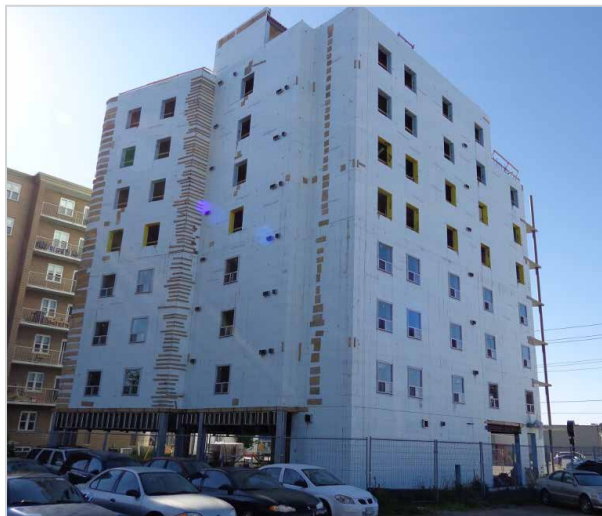
NUDURA Project Profile



28 University Ave Student Residence - Waterloo, ON

FAST FACTS

- A high-performance building envelope with NUDURA Insulated Concrete
- Forms for interior and exterior walls.
- A 70,000 sq.ft. 8-storey building.
- Contains 13-units for student accommodation.
- Brick exterior finish.
- Deciding Factors Speed of Construction, Energy Efficiency, Durability, Sound & Fire Resistance, Cost Efficiency



PROJECT STATISTICS

Location:

Waterloo, Ontario

Type:

Apartments

Size:

70,000 Sq Ft.

CONSTRUCTION TEAM

Architect:

IsoMatrixx

ICF System:

NUDURA ICF

