

we'll LEED® you to  
eco-friendly solutions.

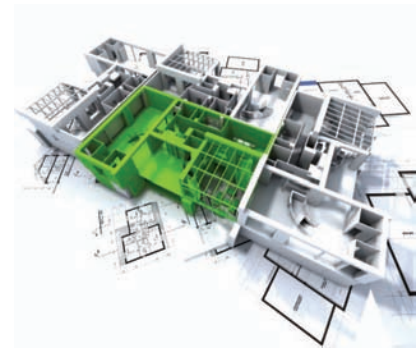
## The Future of Sustainable Building.



- **Recycled Materials** - NUDURA forms are manufactured from EPS (Expanded Polystyrene). NUDURA's unique folding web design is manufactured from 100% recycled polypropylene and steel.
- **Building Durability** - NUDURA forms offer a structure built out of concrete, one of the most durable building materials which result in buildings that stand the test of time. Building with NUDURA means high impact resistance and maximum safety in high wind areas.
- **Waste Reduction** - The unique 4-Way Reversible System from NUDURA creates less waste during the construction process, sending less waste to our landfills. All waste is 100% recyclable\*.
- **Mold Resistant** - NUDURA forms have been laboratory tested and will not support mold growth unlike traditional wood frame structures providing healthier indoor living and working environments.
- **Energy Performance** - A NUDURA structure can provide Performance Values as high as R-50, saving up to 70% in annual energy costs. Building with NUDURA Insulated Concrete Forms reduces a building's operational energy demands, and as a result, the structure's carbon footprint on the environment.
- **Improved Indoor Air Quality** - The end result is an airtight structure that enables building mechanical systems to heat, cool and ventilate the structure more efficiently, creating a healthier living or working environment. NUDURA forms do not emit CFC's or HCFC's thereby improving indoor air quality.



For more information contact our technical support team at 866.468.6299 or contact your nearest NUDURA Authorized Distributor. To access our **LEED® Calculator** visit us online at [nudura.com](http://nudura.com).





**NUDURA Insulated Concrete Forms Contribute to LEED®**

Specifying the NUDURA® Wall System can provide contributions to various credit categories within the following LEED® Green Building Rating Systems:

- USGBC LEED® 2009 For New Construction and Major Renovation (U.S.)
- CaGBC LEED® 2009 For New Construction and Major Renovation (CAN)



**Points Attainable:**

Category Code	Assessment/Element	Credit Designation	Possible Points
EA	Energy & Atmosphere •Optimize Energy Performance	Credit 1	19
MR	Materials & Resources •Construction Waste Management*	Credit 2	1
	50% Recycled or salvaged		2
	75% Recycled or salvaged		
	•Recycled Content 10% (total - post consumer + 1/2 pre-consumer) 20% (total - post consumer + 1/2 pre-consumer)	Credit 4	1 2
	•Regional Materials 10% (U.S.) 20% (CAN) Extract/ Manuf. within 500 mi.(800 km) of site 20% (U.S.) 30% (CAN) Extract/ Manuf. within 500 mi.(800 km) of site	Credit 5	1 2
	IEQ Indoor Environmental Air Quality Low-Emitting Materials: Adhesives and Sealants	Credit 4.1	1



For more information contact our technical support team at 866.468.6299 or contact your nearest NUDURA Authorized Distributor. To access our LEED® Calculator visit us online at [nudura.com](http://nudura.com).

