

NUDURA STANDARD 6"
(152mm) FORM UNIT

EXTERIOR FINISH AS
SPECIFIED

LINTEL REINFORCEMENT
AS PER CODE OR AS
SPECIFIED PER
APPENDIX E

ALUMINUM DRIP CAP
FLASHING INSTALLED BELOW
FINISH FOR FULL FRAME
WIDTH INSTALLED AS PER
CODE OR AS SPECIFIED

EXTENDED DOOR
FRAME SCREWED
DIRECTLY INTO
NUDURA CONCRETE
CORE

DOOR THRESHOLD

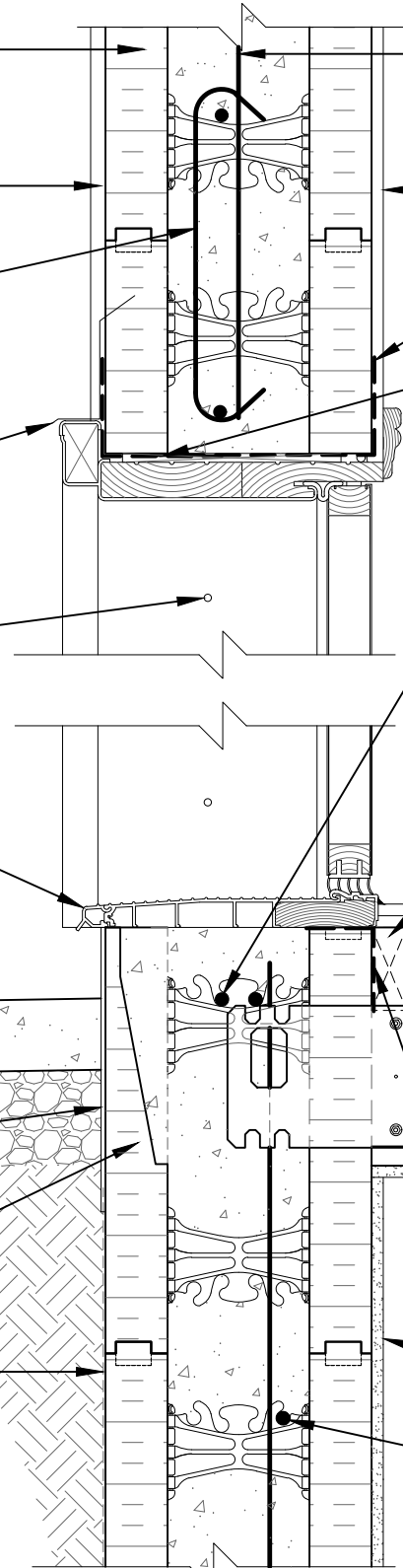
EXTERIOR CONCRETE
SLAB AND SLOPE AS
PER CODE

$\frac{3}{16}$ " (5mm) ACRYLIC
PARGE COAT TO 6"
(150mm) BELOW GRADE

NUDURA 6" (152mm)
TAPER TOP FORM UNIT
BELOW DOOR OPENING
ONLY

NUDURA WATERPROOFING
MEMBRANE

DISCLAIMER NOTICE:
SPECIFIC INFORMATION
REQUIRED FOR COMPLIANCE
WITH LOCAL CODES IS THE
RESPONSIBILITY OF THE
DESIGNER



VERTICAL
REINFORCEMENT AS
PER CODE OR AS
SPECIFIED

$\frac{1}{2}$ " (13mm) GYPSUM
BOARD

VAPOR BARRIER
LAPPED AND SEALED
TO DOOR FRAME

AIR BARRIER FLASHING
INSTALLED AS PER
SECTION 9.1 OF THE
NUDURA INSTALLATION
MANUAL OR AS
DETAILED BY LOCAL
CODE (CODE GOVERNS)

OPENING
REINFORCEMENT
AS PER CODE OR
AS SPECIFIED

BLOCKING b/n
JOISTS

FLOOR FINISH
AS SPECIFIED

PROPRIETARY
EMBEDDED JOIST
ANCHORAGE SYSTEM
OR EQUIVALENT

FLOOR
JOISTS/TRUSSES
AS SPECIFIED

LAP VAPOR BARRIER
TO CONTACT DOOR
THRESHOLD

$\frac{1}{2}$ " (13mm)
GYPSUM BOARD

HORIZONTAL
REINFORCEMENT AS
PER CODE OR AS
SPECIFIED

Typical Details

Detail: Standard 6" (152mm) Form Unit
Door Head/Threshold Detail Non-Brick Finish

File Name:

Drawn by: K. Still

Scale: 1 1/2" = 1'-0"

Date: 10/29/2021

C-23



Nudura Technical Support: 866-468-6299
International: +1 705-726-9499



Construction Products Group

tremcocpg.com