

EXTERIOR FINISH AS SPECIFIED

NUDURA 6" (152mm) STANDARD FORM UNIT

LINTEL REINFORCEMENT SPECIFIED IN APPENDIX E

WOOD, VINYL, STEEL, ETC. BUCK MATERIAL FASTENED TO CONCRETE w/ EMBEDDED SPIRAL NAILS, BOLTS, SCREWS IN STAGGERED PATTERN, OR AS PER MANUFACTURER'S SPECIFICATIONS

ALUMINUM DRIP CAP FLASHING INSTALLED BELOW FINISH FOR FULL WIDTH OF FRAME AS PER CODE OR AS SPECIFIED

AIR BARRIER/DRAINAGE FLASHINGS (SEE NOTE A)

SILL PAN (OPTIONAL)

2x2" (38x38mm) ROUGH NAILER

OPENING REINFORCEMENT AS PER CODE OR AS SPECIFIED

1/2" (13mm) GYPSUM BOARD

VERTICAL REINFORCEMENT AS PER CODE OR AS SPECIFIED

VAPOR BARRIER LAPPED & SEALED TO WINDOW FRAME

1 1/2" (38mm) MIN. COVER

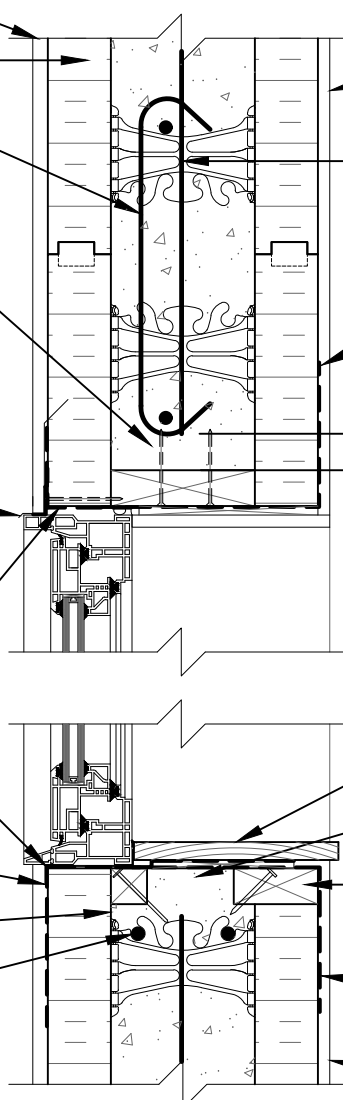
SILL EXTENSION

CONCRETE FLUSH TO BOTTOM OF JAMB

2x4" (38x89mm) BLOCKING TO PERMIT CONCRETE PLACEMENT

VAPOR BARRIER LAPPED & SEALED TO WINDOW FRAME

1/2" (13mm) GYPSUM BOARD



DISCLAIMER NOTICE:
SPECIFIC INFORMATION REQUIRED FOR COMPLIANCE WITH LOCAL CODES IS THE RESPONSIBILITY OF THE DESIGNER

NOTE A: AIR BARRIER/DRAINAGE FLASHINGS TO BE INSTALLED AROUND COMPLETE OPENING PERIMETER AS PER SECTION 9.1 OF THE NUDURA INSTALLATION MANUAL OR AS DETAILED BY LOCAL APPLICABLE CODES (CODE GOVERNS)

The architecture, engineering, and design of the project using the Nudura products are the responsibility of the project's design professional. All products and systems must comply with local building codes and standards. This detail is for general information and guidance only and Nudura specifically disclaims any liability for the use of this detail. The project design professional determines, in its sole discretion, whether this detail or a functionally equivalent detail is best suited for the project. This detail is subject to change without notice. Contact Nudura to ensure you have the most recent version.

Typical Details

 Nudura Technical Support: 866-468-6299 International: +1 705-726-9499	Detail: Standard 6" (152mm) Form Unit Window Head/Sill Detail Non-Brick Finish Window to Exterior		File Name: C-21	 Construction Products Group
	Drawn by: K. Still	Scale: 1 1/2" = 1'-0"	Date: 10/29/2021	